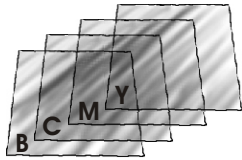


Digital Ink Fountains Preset from PrePress Data
DIPSONline - Digital Ink Preset System
Pressroom: Dogan Printing Centre, Istanbul, Turkey
Installation: April 2007

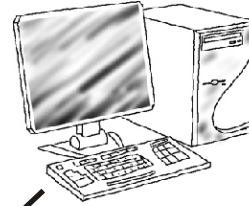
PrePress

Kodak CtP



Printing Plates

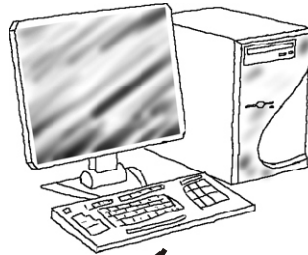
Workflow
Prinergy
with Printlink option



Network connection

reading
of the prepress data
from hotfolder

Pressroom

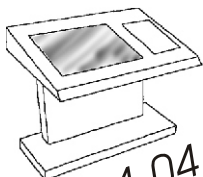


Press PC with both the **DIPS CIP3/4 Converter** converting prepress information in CIP3/4 format from Prinergy to image area coverage information and the **Ink Preset Software** which calculates ink fountains preset values from image area coverage information.

- Press PC configuration minimum:
- Processor - Pentium III or compatible
 - RAM 512 MByte
 - Ethernet 100 Mb
 - 4 x USB

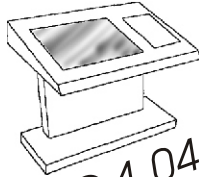
Online connection
to Heidelberg press

DIPSONline Card for
Heidelberg



CPC 1.04

DIPSONline Card for
Heidelberg



CPC 1.04

