

CIP3/4 Ink Fountains Preset from PrePress Data

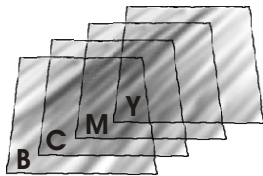
DIPS - Digital Ink Preset System

Pressroom: **Szechenyi Nyomda, Gyor, Hungary**

Date of the Installation: **February 2007**

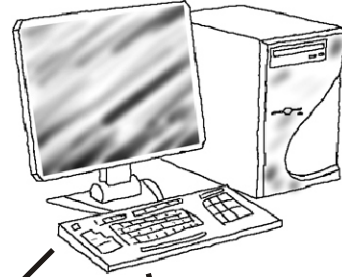
PrePress

**CTP
Fuji**



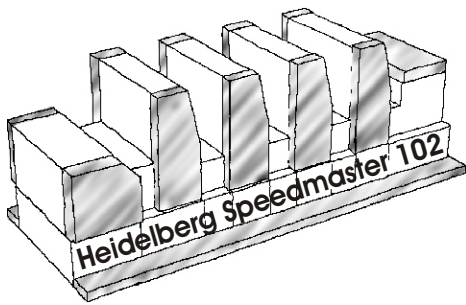
Printing plates

**Workflow
Fuji Celebrant**

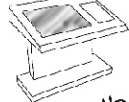


Network
connection

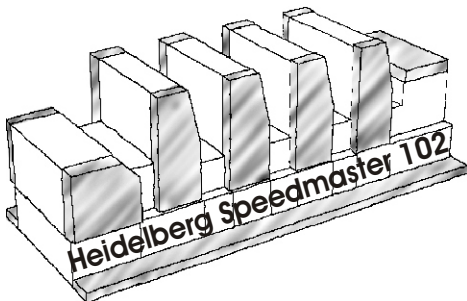
Pressroom 1



DIPSONline Card for
Heidelberg



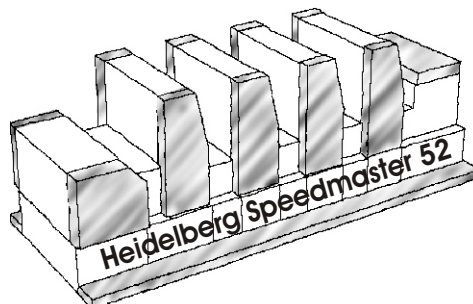
Heidelberg
CPC 2000



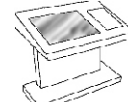
DIPSONline Card for
Heidelberg



Heidelberg
CPC 1.04



DIPSONline Card for
Heidelberg



Heidelberg
CPC 2000

Press PC with DIPS TIFF Converter
and Ink Preset Software.

DIPS TIFF Converter reads TIFF
pre press files from Celebrant and
converts image area coverage
information.

Ink Preset Software calculates
ink preset values from image coverage
information for the presses